



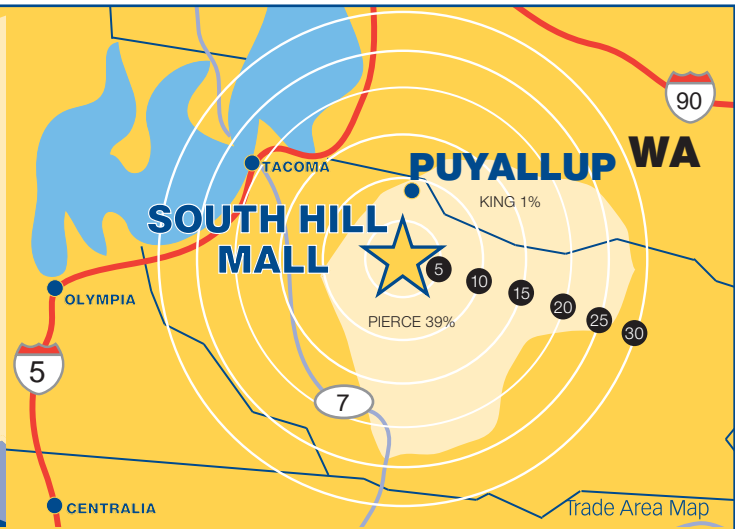
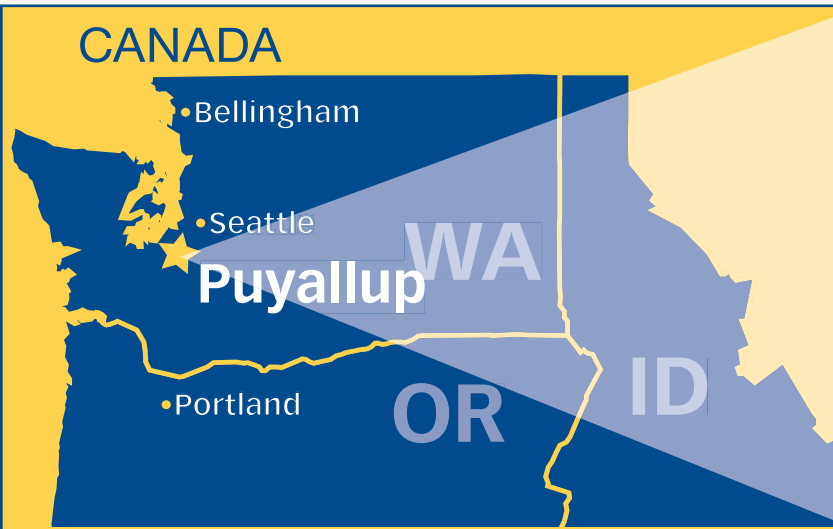
SOUTH HILL MALL

PUYALLUP, WASHINGTON



About South Hill Mall

South Hill Mall is a 1 million plus square foot regional center serving the Tacoma/Puyallup, Washington market. Located approximately 35 miles south of Seattle, the center was completely renovated in 2009. Anchor stores include Macy's, Target, Dick's Sporting Goods, JCPenney, Sears and Regal Cinemas, plus more than 100 specialty shops. The outparcels of this 100 acre complex include Toys "R" Us, Red Robin, Olive Garden, Applebee's, Famous Dave's Barbecue, Krispy Kreme, Jack in the Box and Chase Bank. South Hill Mall serves a vibrant, growing community which hosts major employers such as Boeing, Intel and the nearby Joint Base Lewis/McChord, employing over 50,000 military personnel.



Trade Area Facts

Trade Area Population	333,496
Average Household Income	\$82,254
Number of Households	126,710
Median Age	36.6

Trade area data on this page is adjusted to reflect portions of counties in the trade area.
Data Source: Scan/US 2011, 2011 Edition of Editor & Publisher Market Guide.

South Hill Mall Facts

Opening Date	1988
Renovation Date	2009
Total Property Size	1 Million + sq.ft

12 Largest Employers In The Puyallup Area

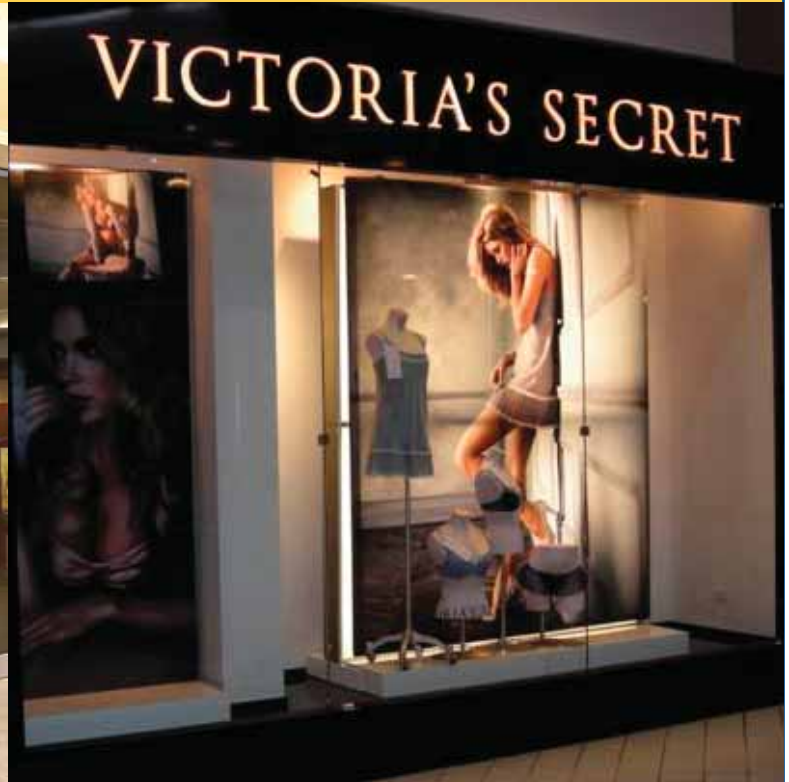
Joint Base Lewis/McChord /Madigan Army Medical Center	55,603
Public School Districts	13,735
Multicare Medical Center	6,756
Washington State Government	6,662
Franciscan Health System	5,507
Pierce County	2,947
Washington State Higher Education	2,720
Emerald Queen Casino	2,316
City of Tacoma	2,230
Boeing / Frederickson Site	1,450
Walmart	1,447
Fred Meyer Stores	1,301

News Tribune - Source: Economic Development Board for Tacoma-Pierce County

For additional information visit us online at www.CafaroCompany.com

CAFARO

Over 60 Years



2445 Belmont Avenue • P.O. Box 2186 • Youngstown, OH 44504-0186
For leasing information Phone: 253-840-4349 • Email: jcorsell@carafocompany.com
For additional information visit us online at www.CafaroCompany.com

